

Schedule 1

Item 1 Description of Agreement Area

A. External boundary description

The agreement area covers all the land and waters subject to Lot 4 on SM7 (Glen Easter Pastoral Holding), Lot 7 on SM92 (Mount Wyatt Pastoral Holding), Lot 5 on SM7 (Sellheim Pastoral Holding) and Lot A on SM63 within the external boundary of the QUD6230/98 Jangga People (QC98/10) native title determination application, as accepted for registration on 19 October 2004, being that area of those lots south of a line defined as:

Commencing at a point at Longitude 147.157137° east Latitude 20.712095° south, being a point on the northern boundary of the QUD6230/98 Jangga People (QC98/10) native title determination application and extending generally south easterly along that native title determination application boundary passing through the following coordinate points.

Longitude ° (East)	Latitude ° (South)
147.174847	20.719516
147.191982	20.724833
147.214601	20.734208
147.223562	20.741255
147.245779	20.747956
147.258630	20.754968
147.275702	20.763962
147.295263	20.773295
147.316057	20.782635
147.334377	20.793667
147.356993	20.805879

Note

Data Reference and source

- Agreement boundary data compiled by National Native Title Tribunal based on data sourced from the Department of Natural Resources and Mines (Qld) (February 2012).
- Native title determination application QUD6230/98 Jangga People (QC98/10) as accepted for registration on 19 October 2004.
- Cadastre data sourced from the Department of Natural Resources and Mines (Qld) (February 2012).

Reference datum

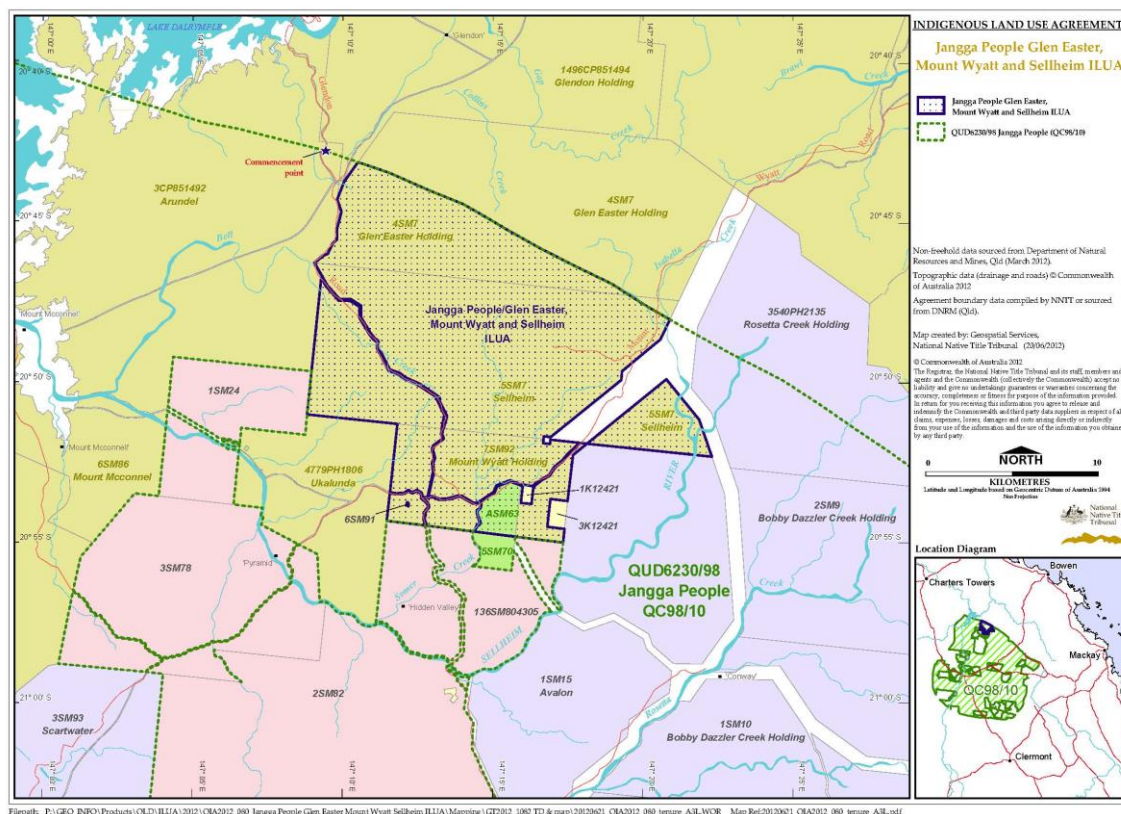
Geographical coordinates have been provided by the NNTT Geospatial Services and are referenced to the Geocentric Datum of Australia 1994 (GDA94), in decimal degrees and are based on the spatial reference data acquired from the various custodians at the time

Use of Coordinates

Where coordinates are used within the description to represent cadastral or topographical boundaries or the intersection with such, they are intended as a guide only. As an outcome to the custodians of cadastral and topographic data continuously recalculating the geographic position of their data based on improved survey and data maintenance procedures, it is not possible to accurately define such a position other than by detailed ground survey.

Prepared by Geospatial Services, National Native Title Tribunal (20 June 2012).

B. Map



Item 3 Description of Lease

Pastoral Holding 5/5431 comprising Lot 4 on CP SM7 commonly known as Glen Easter

Pastoral Holding 5/5042 comprising Lot 7 on CP SM92 commonly known as Munt Wyatt

Pastoral Holding 5/5432 comprising Lot 5 on CP SM7 commonly known as Sellheim

Term Lease 0/212487 comprising Lot A on CP SM63

Item 4 Description of Lessee

Dooruna Pastoral Company Pty Ltd ACN 130 797 518